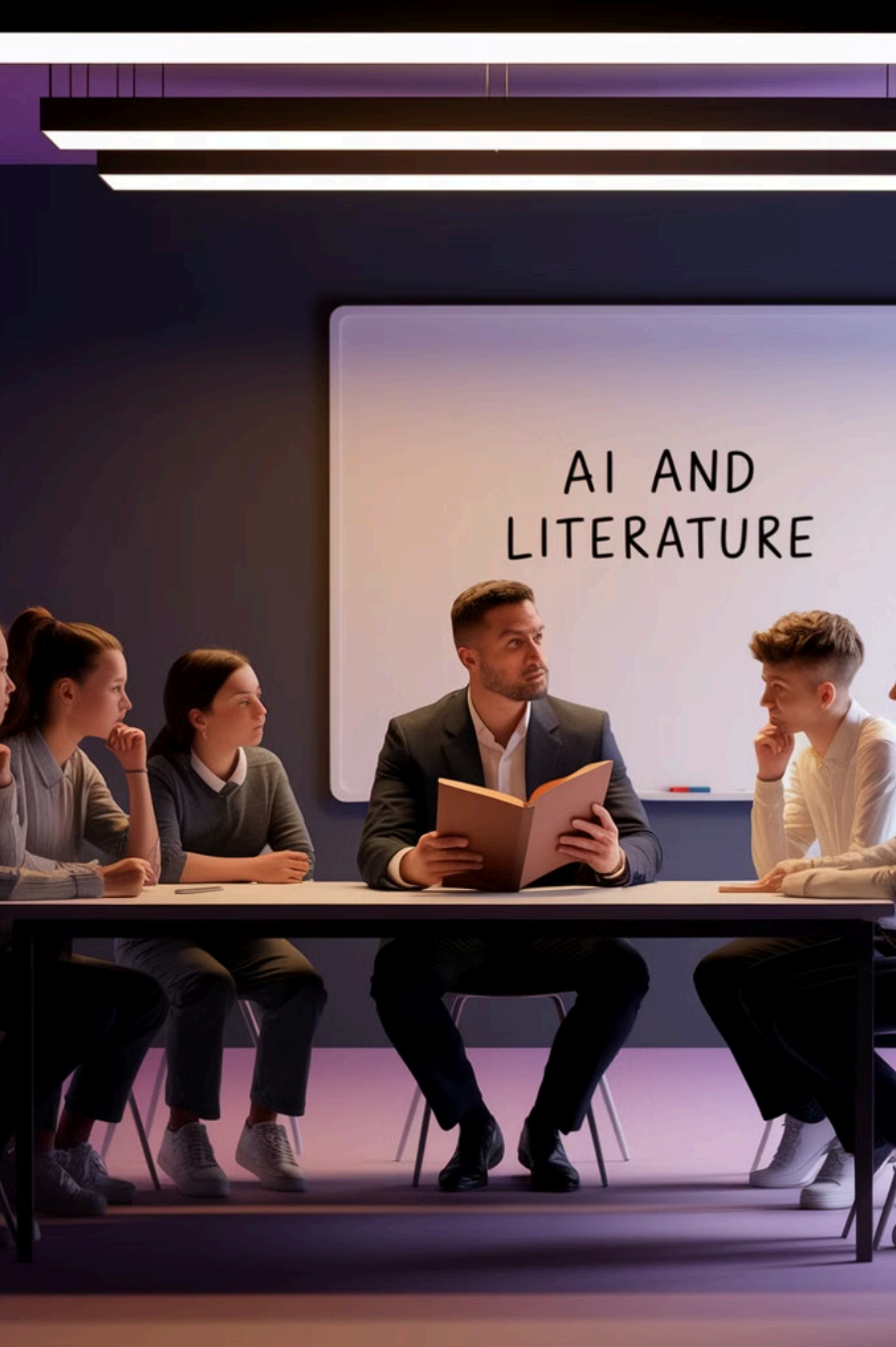


AI Tools for Literature Teachers: Strengths & Limitations

Everyday, new AI tools and applications find their way into the mainstream. Here, we take a look at the strengths and weaknesses of several different AI tools.



by William Toomey



Introduction to AI in Literature Education

Artificial intelligence (AI) is increasingly influencing the landscape of education. There is not a subject that will remain unchanged. For Literature classes, AI tools offer new possibilities for engaging students with texts, enhancing their writing skills, and facilitating deeper analysis. It goes without saying that we need to approach AI integration with a critical lens. We need to consider its strengths and limitations alongside potential ethical and pedagogical implications.

Overview of AI Tools in Literary Analysis

Several AI tools have emerged to assist literature teachers in various aspects of instruction. These tools can be broadly categorized into those focused on literary analysis, writing assistance, and language support.

Literary Analysis

AI-powered platforms can analyze text structure, identify themes, and provide contextual insights. Tools like ChatGPT can generate discussion prompts and facilitate student understanding of literary analysis.

Writing Assistance

AI tools like Grammarly can assist students in improving their writing skills by providing grammar and style correction, offering synonyms, and enhancing clarity.

Differentiated Learning

Through the previously mentioned tools and others, we gain the ability to personalize learning to individual students based on their learning styles and interests.

ChatGPT: Capabilities and Classroom Applications

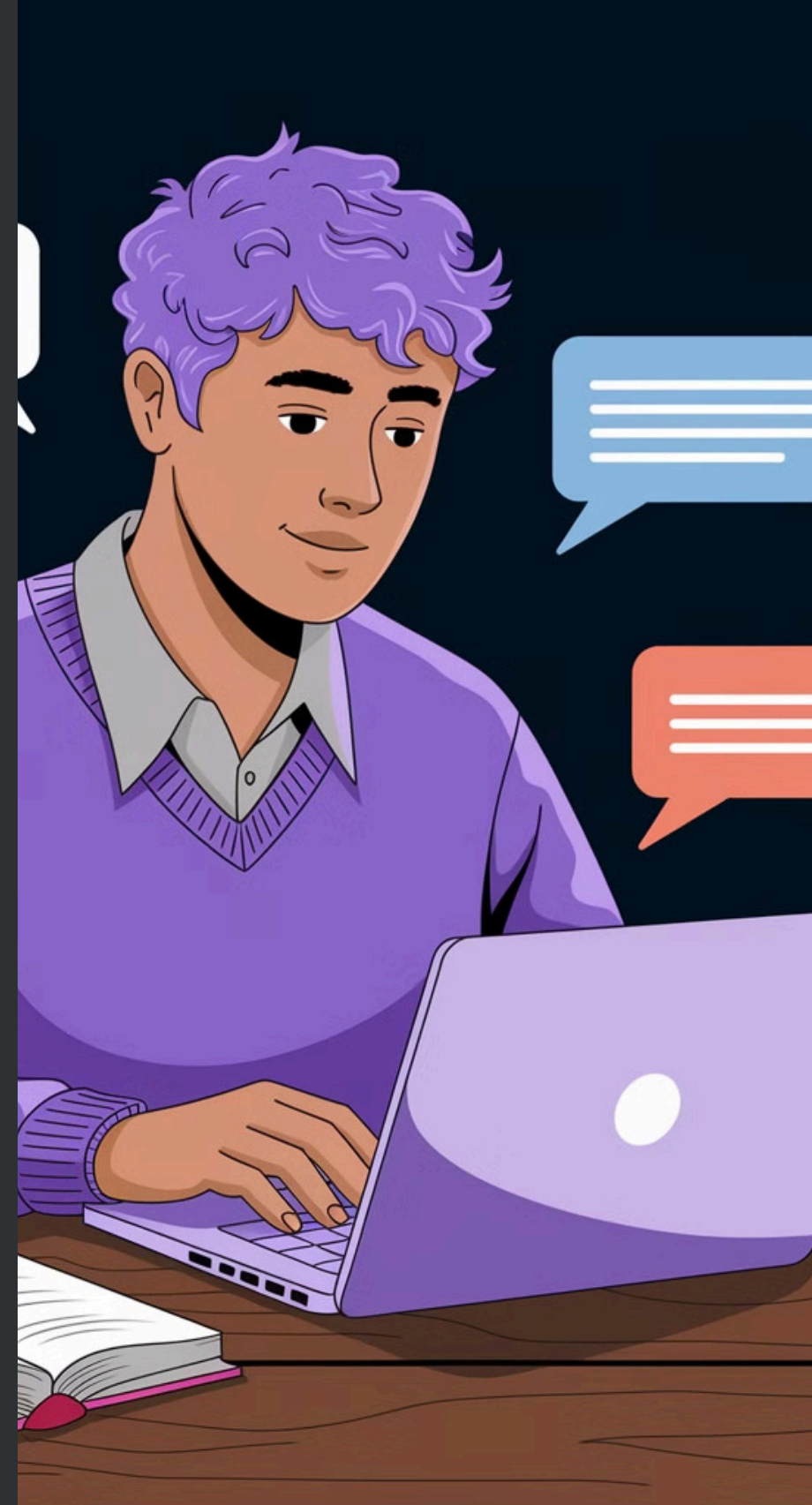
ChatGPT is a large language model (LLM) capable of generating human-like text, translating languages, and writing different kinds of creative content. In the context of literature education, ChatGPT can:

1 Strengths

- Generate discussion prompts to spark student engagement with literary texts.
- Aid in literary analysis by identifying key themes, motifs, and literary devices.
- Provide writing assistance by generating ideas, structuring essays, and refining sentence structure.

2 Limitations

- May generate incorrect literary interpretations due to its reliance on training data.
- Lacks the nuanced human understanding required for sophisticated literary analysis.
- Could be used by students to plagiarize content, requiring careful monitoring and ethical guidance.



Grammarly: Writing Enhancement and Editing Support

Grammarly is a widely used AI-powered writing assistant that provides grammar and style correction, vocabulary suggestions, and plagiarism detection. In literature education, Grammarly can:

1

Strengths

- Enhance student writing by identifying and correcting grammatical errors, improving clarity and style.
- Provide synonyms and vocabulary suggestions to expand student vocabulary and writing fluency.
- Offer plagiarism detection to ensure academic integrity and foster responsible writing practices.

2

Limitations

- May not always recognize the nuances of literary language and style.
- Can be overly prescriptive, potentially hindering creative writing and unique voices.
- Reliance on Grammarly for editing can hinder the development of students' critical thinking and self-editing skills.



Comparative Analysis of AI Tool Performance

AI Tool	Strengths	Limitations
ChatGPT	Generates discussion prompts, aids in literary analysis, provides writing assistance.	May generate incorrect literary interpretations, lacks nuanced human analysis, potential for plagiarism.
Grammarly	Grammar and style correction, improves clarity, offers synonyms, detects plagiarism.	May not always recognize literary language nuances, can be overly prescriptive, hinders self-editing skills.

While each tool offers unique benefits, it is crucial to acknowledge their limitations and use them judiciously to support student learning.

Ethical Considerations and Pedagogical Challenges

Integrating AI tools into literature teaching raises ethical and pedagogical considerations that warrant careful attention.

1

Ethical Considerations

- **Plagiarism:** The potential for students to misuse AI tools for plagiarism raises concerns about academic integrity and the importance of responsible use.
- **Bias and Fairness:** AI algorithms can perpetuate existing biases, leading to unfair or inaccurate representations of literary texts and characters.
- **Data Privacy:** Sharing student data with AI platforms requires careful consideration of privacy regulations and ethical implications.

2

Pedagogical Challenges

- **Over-reliance:** Students may become overly reliant on AI tools, hindering the development of critical thinking and independent learning skills.
- **Understanding AI:** Teachers must be equipped to understand AI's capabilities and limitations to guide students effectively.
- **Curriculum Integration:** Integrating AI tools into the curriculum requires careful planning and alignment with learning objectives.

Recommendations for Effective AI Integration in Literature Teaching

To harness the potential of AI in literature teaching while addressing its challenges, educators should adopt a balanced and thoughtful approach.

1

Focus on AI as a Tool, Not a Replacement

AI tools should be used as supplementary resources to support student learning, not as replacements for human interaction and critical thinking.

2

Foster Critical Engagement with AI

Teachers should encourage students to critically analyze AI outputs, identifying potential biases and limitations.

3

Emphasize Ethical Use

Educators must establish clear guidelines for responsible AI use, addressing plagiarism, data privacy, and ethical considerations.

4

Embrace Professional Development

Teachers should engage in professional development to acquire the knowledge and skills necessary to integrate AI tools effectively.

By adhering to these recommendations, educators can leverage AI tools to enhance student learning and engagement while upholding ethical standards and promoting responsible AI integration in the classroom.

AI Disclaimer and Notice

This slidedeck was created for wjtoomey.com using Gamma.app. Gamma.app is an AI driven design tool that can generate slidedecks, websites, social media posts, and documents. The images on this slidedeck were also AI generated inside the Gamma.app suite.

Some text on these slides was reviewed by AI, but the majority was written by a human being.